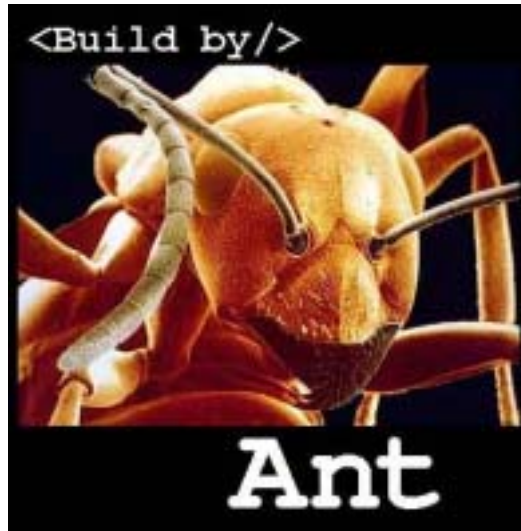


TRAMP: Traveling Repair and Maintenance Platform

Building Tutorial



Using ANT in our environment

Reinhard Stein

December 10th 2001

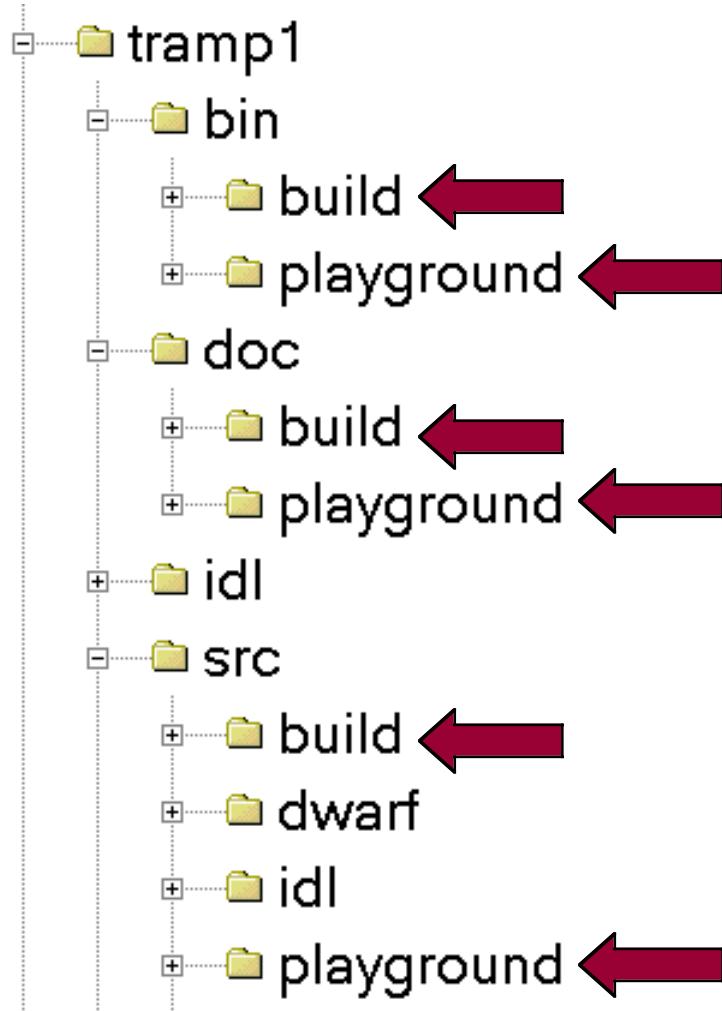
Environment structure



Two directories **build** and **playground** for the sources with subdirectories for each team.

Pretty much the structure Asa MacWilliams posted on the Announce BBoard and Joerg Dolak proposed as a „typical project directory structure“ in his ANT tutorial.

Environment structure



The structure in **src** is mapped (copied) under **bin** and **doc**.

Binaries of sources in **tramp1/src/build/net/** will be in **tramp1/bin/build/net/** afterwards, the generated documentation files are in **tramp1/doc/build/net/**.

Setting up the PATH

Add the following lines to your **.tcshrc** file:

```
setenv JAVA_HOME /System/Library/Frameworks/JavaVM.framework/Home
setenv JAKARTA_HOME ~zaun/Applications/java/jakarta
setenv ANT_HOME /Network/Shared/tramp/ant-1.4.1
setenv PATH ${ANT_HOME}/bin:$PATH
```

Ant will be copied somewhere else during the next days, but at the moment, it works fine.

Using ANT

The **build.xml** file will be in the **tramp1** repository.

When typing „**ant**“ without any options, ANT will look for the build file and start the default target, in our case „**build**“.

To save time, use team specific targets like „**build_app**“ or „**build_ui**“.

Other targets like „**doc**“, „**test**“ or „**deploy**“ will come soon.

Example on ANT

An example for the application team:

For build1, put the sources in your team's directory:
`tramp1/src/build/app/`.

Type „**ant**“ to build the whole project, to build only your team's files
type „**ant build_app**“.

The generated classes will be found in `tramp1/bin/build/app/`.
Documentation files can be found in `tramp1/doc/build/app/`.

Additions

Check in **only** compileable files!

Feel free to post any comments or suggestions on the wearable bboard.

Have fun!